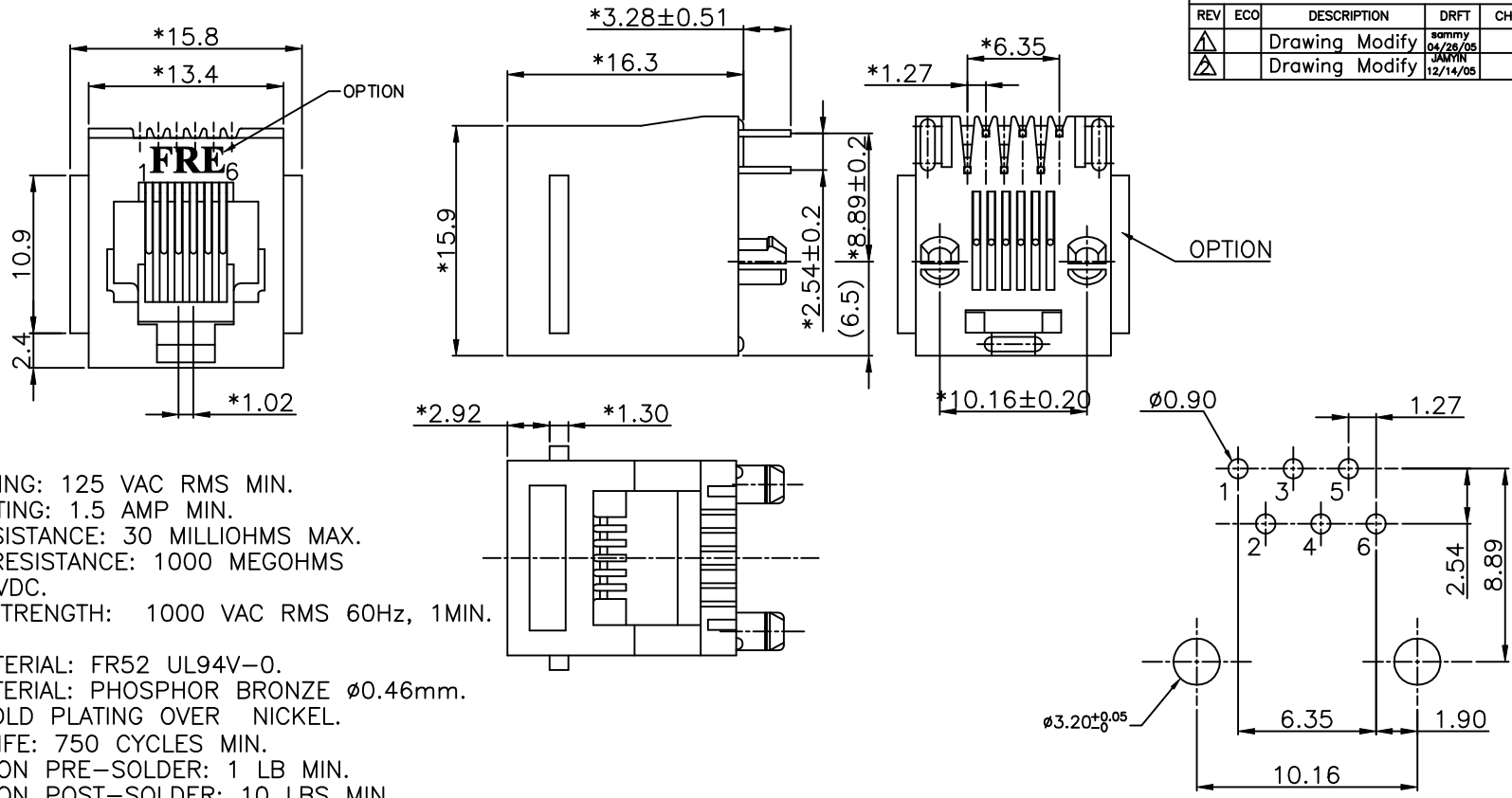


REVISION RECORD				
REV	ECO	DESCRIPTION	DRFT	CHKD
△		Drawing Modify	sommy 04/26/05	
△		Drawing Modify	JAMIN 12/14/05	



NOTES:

ELECTRICAL:

1. VOLTAGE RATING: 125 VAC RMS MIN.
2. CURRENT RATING: 1.5 AMP MIN.
3. CONTACT RESISTANCE: 30 MILLIOHMS MAX.
4. INSULATION RESISTANCE: 1000 MEGOHMS MIN @ 500 VDC.
5. DIELECTRIC STRENGTH: 1000 VAC RMS 60Hz, 1MIN.

MECHANICAL:

- △1. HOUSING MATERIAL: FR52 UL94V-0.
2. CONTACT MATERIAL: PHOSPHOR BRONZE $\phi 0.46\text{mm}$.
3. PLATING: GOLD PLATING OVER NICKEL.
4. OPERATING LIFE: 750 CYCLES MIN.
5. PCB RETENTION PRE-SOLDER: 1 LB MIN.
6. PCB RETENTION POST-SOLDER: 10 LBS MIN.

ENVIRONMENTAL:

1. STORAGE TEMPERATURE: -40°C TO $+85^{\circ}\text{C}$.
- △2. OPERATION TEMPERATURE: 0°C TO 70°C .
3. WAVE SOLDERING TEMPERATURE: $255\sim 265^{\circ}$ (5~10 SECONDS)

MATES WITH MODULAR PLUG CONFORMING TO FCC PART 68, SUBPART F.

CUL FILE NO. E163191

△△ROHS PART NO: E526X-XXOXXX-L

NO. OF CONTACT

2-2C 4-4C
6-6C

00-W/O "FRE" LOGO

01-W/ "FRE" LOGO

Gold Plating:

1-3u" 2-6u"

3-15u" 4-30u"

5-50u" 6-Pd 20u"

B3-W/ PANEL STOP BK

B4-W/O PANEL STOP BK

△ A3-W/ PANEL STOP GY

PC Board Layout
Component Side Shown
Dimension Tolerance: ± 0.05

DETACHED LISTS	MM (INCH)	DFTO ANKUE	DATE 03/28/05	FULL RISE ELECTRONIC CO., LTD	
	TOLERANCES EXCEPT AS NOTED	CHKD ANKUE	DATE 2005/12/16		
	MM	MFO	DATE	TITLE 180° TOP ENTRY PCB JACK 6P	
	.0 ±0.20	APPVL LUSHENG	DATE 2005/12/16		
.00 ±0.15	MATERIAL :	QT'Y :		DRAWING NO. GE523011-LA	SIZE A3
.000 ±0.075	ANGLES ±	FINISH :		/PART NO. SEE NOTE	REV 2
THIRD ANGLE PROJECTION	SCALE : 3:1	DO NOT SCALE DRAWING		SHEET X	OF Y